

6

Activity idea – KS2 working scientifically – do posters work?

Learning objectives

That it is everyone's responsibility to put rubbish in the bin and to pick up litter. There are different ways to encourage people to keep their local area tidy and by being creative you can look after the environment and your local area.

Curriculum links

Science – Lower KS2 – Working scientifically:

- Setting up simple practical enquiries, comparative and fair tests
- Recording findings using simple scientific language, drawings, labelled diagrams, keys, bar charts, and tables
- Reporting on findings from enquiries, including oral and written explanations, displays or presentations of results and conclusions
- Using results to draw simple conclusions, make predictions for new values, suggest improvements and raise further questions

Geography - KS2 - Human and Physical Geography - use maps including sketch maps

Art – KS2 - Improve their mastery of art and design techniques, with a range of materials [for example the litter collected]

Resources

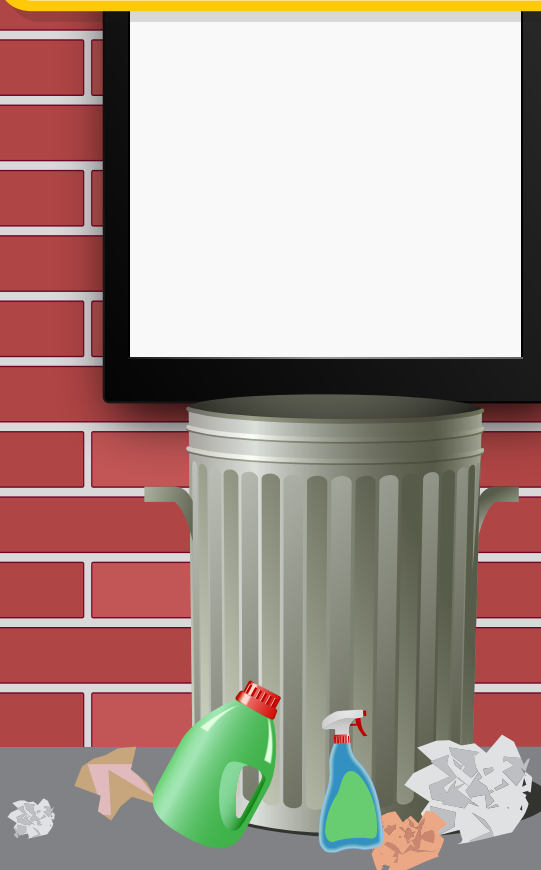
From the Clean for The Queen pack;

- **Resource - how to organise your own litter-pick – information and litter survey sheet**
- **Worksheet – KS2 working scientifically – do posters work?**
- **Resource – please put rubbish in the bin – stick and colour poster**
- Colouring pens
- Glue or sticky tape
- Scissors

Litter-picking kit

- Litter-pickers
- Rubbish bags
- Hand-washing facilities

A sketch map of your school



Activity ideas

Work scientifically to test the hypotheses that posters encourage people to put rubbish in the bin.

1. Hand out to pupils copies of the “**Worksheet – KS2 working scientifically - do posters work?**” and discuss the hypotheses poster encourage people to rubbish in the bin
2. As a class look at/or draw a sketch map of the school. With the pupils and discuss which areas are most prone to litter. Mark these areas on the map.
3. Do a litter-pick around these areas and use the “How to organise a litter-pick and survey sheet” to record the types of litter that you have found.
4. Colour in and stick rubbish on the “PLEASE PUT RUBBISH IN THE BIN” posters and put them up in the areas with the most litter for a week. (Think about how to make them waterproof. Putting them clear filing pockets is an effective way of preventing posters from getting soggy).
5. A week later go back and do another litter-pick and make a graph comparing your before and after results.
6. Compare how much litter is in the area before you put up the posters and now the posters are up.

Conclusion;

Is the hypothesis correct? Is there less rubbish now you have put up the posters?

Discussion

Is this a fair test?

How could you improve it?

How else could we encourage people to put their rubbish in the bin and pick up their litter?

